

# MBD3057-H20 Planar Tunnel Diode

## Technical Characteristics

### Product Features

- Rugged Germanium Planar Construction
- Excellent Temperature Stability
- No DC Bias Required
- Wide Video Bandwidth

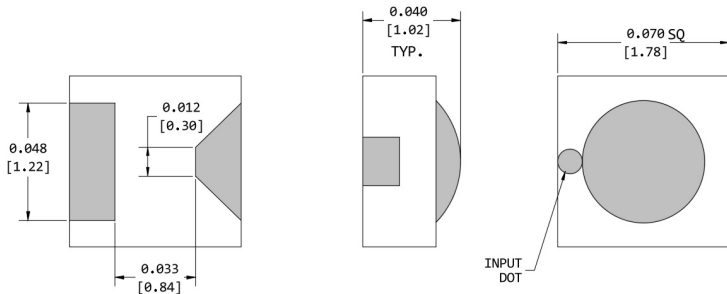
### Product Description

EclipseMDI MBD3057-H20, is a zero-bias, rugged Planar Tunnel Diode constructed with Germanium Planar. This tunnel diode exhibits excellent temperature stability, wide video bandwidth. The MBD3057 is also available in non-hermetic (H20X) ceramic packages.

### Maximum Ratings

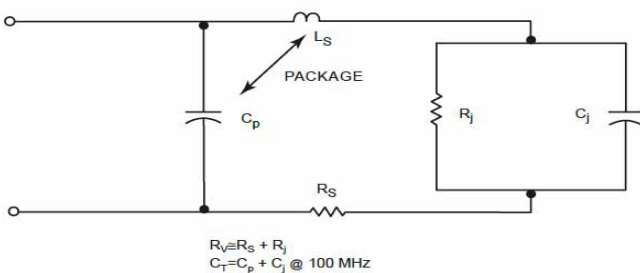
- Storage Temperature.....-65° to +125°C
- Operating Temperature.....-65° to +110°C
- Input Power Handling.....+17dBm CW or 3 ERG spike
- Soldering Temperature.....+160° C

## H20/70X Outline

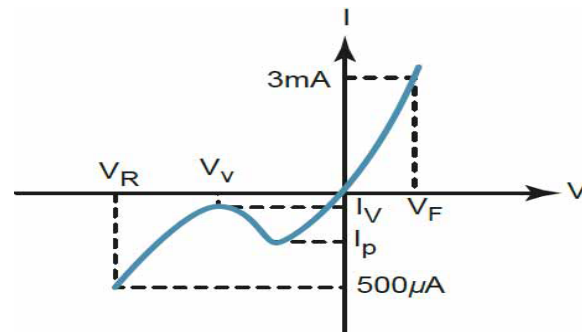


Parameters	Specifications				UNITS
	Conditions	MIN	Typical	MAX	
$I_p$		300		400	$\mu A$
$C_j$	$V_r = V_v$ , $f = 100 \text{ MHz}$			.30	pF
$K[Y]$	$P_{in} = -20 \text{ dBm}$ $R_{Load} = 10 \text{ K}$ , $f = 10 \text{ GHz}$		500		mV/mW
$R_v$			80		$\Omega$ Ohms
$I_p/I_v$		2.5			
$V_r$	$I_f = 500 \mu A$		400		mV
$V_f$	$I_f = 3 \text{ mA}$			125	mV

### Diode equivalent circuit



### Back diode parameters



### About EclipseMDI

ECLIPSE Microdevices is located in San Jose, California. ECLIPSE has been developing high performance analog semiconductors for use in wireless radio frequency (RF), microwave, and millimeter wave for commercial and industrial applications. ECLIPSE has formed a strategic alliances - with foundries that features leading state-of-the-art process technologies and with manufacturing facilities for high-volume production of innovative RFIC's.

Product Export Classification  
 ECCN: EAR 99 (unless otherwise specified)  
 HTS: 8541.10.0060

